

AT GLANCE

Client could not confidently establish the overall risk of multiple anomalies on the Glycol system, due to lack of coherent as-built information, outdated platform drawings and multiple stand alone registers and data sets.

CHALLENGE

Provide our client with a simple, single source of truth for the system which allowed them to make substantiated decisions based on factual condition of the system.

SOLUTION

As part of GDi's mass data capture approach to platform scanning, the Glycol Package had already been scanned and was hosted in Vision as part of the overall platform scan.

The proposed solution was to implement the workflow as follows:

- Create an as built 3D Navisworks model of the Glycol Package, including
 - Pressure systems
 - Vessels
 - Primary/secondary structures
- Tag, colourise and group 95 known anomalies in the Navisworks model
- Upload the as built model to Vision
- Plot the anomalies in Vision



Laser Scanning &
Data management



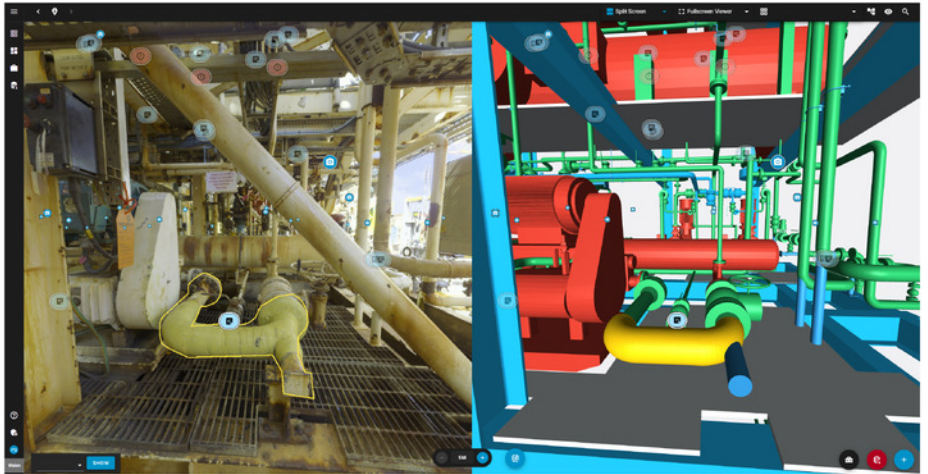
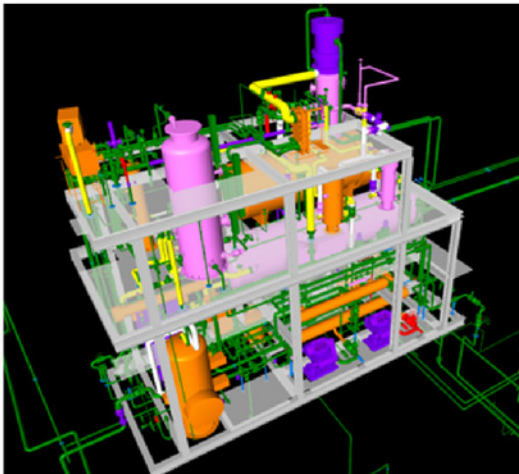
Vision



Engineering
& Design



Strategic Planning



OUTCOME

- 1 On completion of the work scope, client was delivered as built model of the Glycol Package supplied as NWD file with customised user guide, uploaded to Vision.
- 2 **Colouring System**
The model has been colour coordinated depending on the type of component and the Work Orders that have been marked up in GDi Vision, as directed by the client.
- 3 **This approach has allowed the client to see, at a glance, all known anomalies within the package, review key data of each and filter based on specific requirements, thus improving significantly the understanding of risk on the system and take specific remedial action where required.**