



### AT A GLANCE

**Problem:** A UKCS Operator partnered with GDi to develop digital asset management solutions and advanced repair order scopes for execution during an annual TAR.

**Challenge:** Tasked with providing engineered solutions for 19 outstanding safety critical work orders in a compressed time frame.

**Solution:** GDi provided innovative digital solutions, engineering expertise, and intimate 3D modelling capabilities for all work scopes by use of Vision and existing detailed point cloud data.

**Outcomes:** Successful resolution of outstanding work orders, expedited safety measures, and ongoing support for the client's asset management team.

### CHALLENGE

A UKCS Operator collaborated with GDi to address various challenges, including digital solutions and overdue safety critical repair order scopes. During the 2022 TAR, there was a pressing need to design and engineer solutions for 19 outstanding anomalies in a compressed time frame.

### SOLUTION

GDi provided a range of innovative solutions and engineering expertise. One notable example of GDi's capabilities was the provision of an as-built 3D model, detailing the dimensions and supports on a high pressure, safety critical line. **This 3D model allowed the client's asset team to accelerate the delivery of a clamp to rectify the anomaly. GDi created the model within 24-hours,**

In addition to the safety critical TAR scopes, GDi has been key in addressing safety concerns through ongoing remote desktop inspection. GDi's innovative approach to visual inspection led to the identification of a through-wall defect and a potential dropped object, all without the need to attend site. This was achieved by using a combination of point cloud data, HDR images and the inspection tool suite developed and deployed through Vision, GDi's proprietary software.



Laser Scanning & Data management



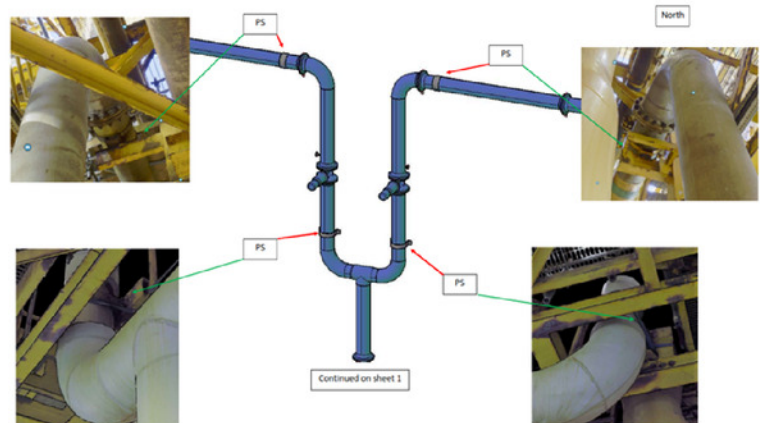
Vision



Desktop Visual Inspection



Condition Assessment



### OUTCOME

The collaboration between GDi and our client has yielded significant results. **GDi's digital solutions and engineering successfully resolved 19 outstanding safety critical work orders contributing to the TAR's overall success.** GDi's rapid 3D modelling capabilities demonstrated their ability to fast-track critical engineering tasks, such as the delivery of a clamp to rectify a high-profile anomaly. This responsiveness not only saved time but also helped mitigate potential safety risks.

**Furthermore, GDi's innovative approach to remote desktop inspection has identified and addressed previously unidentified safety concerns in a timely manner.**

